

TRIGGER SWITCH (FOR TOOLS)



8304

SPECIFICATION:

- 1. RATING : 20.2A 125VAC, 10A 250VAC } (cRU US)
- 1HP 250VAC, 7.5A 125VDC
- 20A 125VAC, 10A 250VAC } (cSF US)
- 15A 125VDC, 7.5A 250VDC
- 10(10)A 250V~5E4 25T85

2. CIRCUIT : DPNO

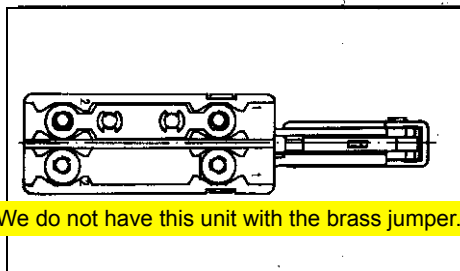
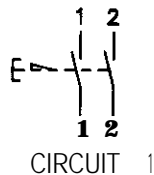
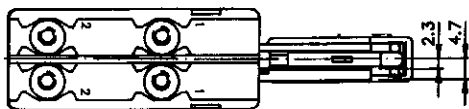
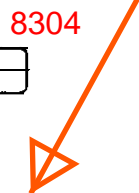
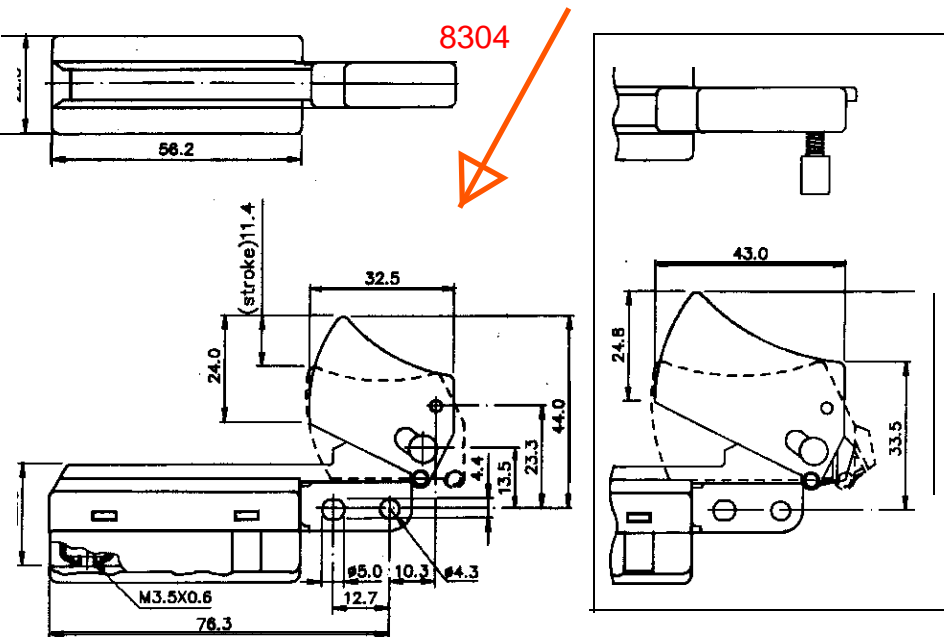
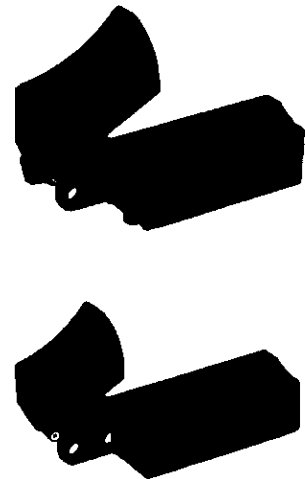
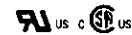
3. INSULATION RESISTANCE : DC 500V 100MΩ OR MORE

4. CONTACT RESISTANCE : DC 2-4V 1A 30mΩ OR LESS

5. WITHSTAND VOLTAGE : AC 1500V 1 Min.

6. ELECTRICAL LIFE : ELECTRICAL OVER 50000 CYCLES
MECHANICAL OVER 100000 CYCLES

PAT.



We do not have this unit with the brass jumper.