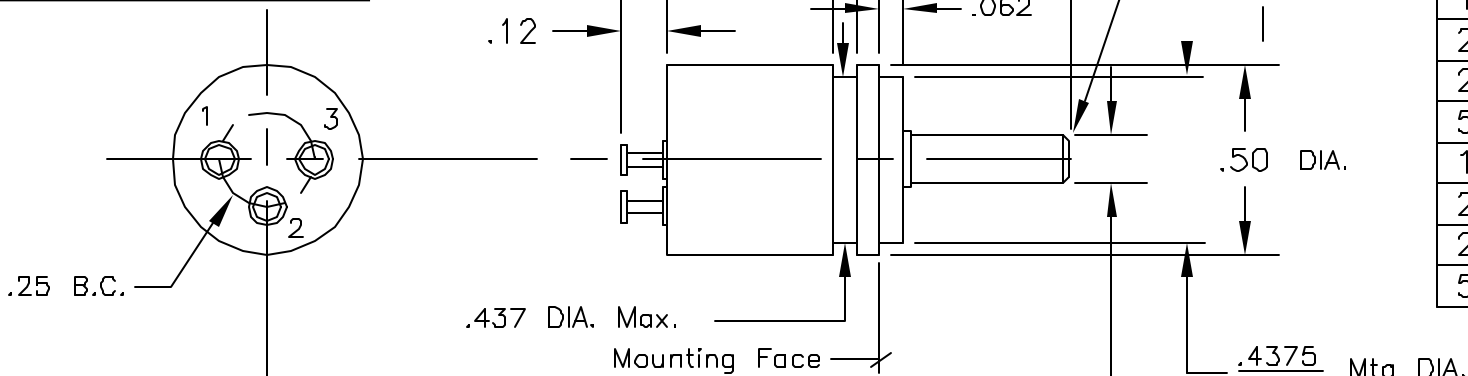
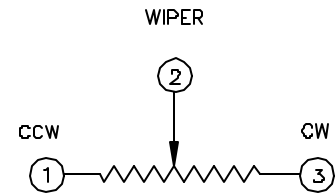


50-M126

Precision Sales Inc
 www.precisionsales.com
 eparts@ix.netcom.com
 610-59-1002



DASH No.	RESISTANCE (ohms)	RESOL. (%)	LIN. (±%)
50R	50	.649	1.3
101	100	.456	1.0
251	250	.378	.80
501	500	.310	.70
102	1,000	.324	.70
202	2,000	.332	.50
252	2,500	.229	.50
502	5,000	.221	.45
103	10,000	.153	.40
203	20,000	.116	.25
253	25,000	.114	.25
503	50,000	.080	.25



SCHEMATIC AS VIEWED FROM SHAFT END

- 12. EQUIVALENT NOISE RESISTANCE: 100 OHMS, MAX.
- 11. LIFE: 1,000,000 CYCLES AT 40 RPM.
- 10. DIELECTRIC STRENGTH: 750 V RMS FOR 60 SEC.
- 9. WATTAGE: 1.0 W AT 85°C DERATED TO ZERO AT 135°C.
- 8. OPERATING TEMPERATURE RANGE: -55 TO +135 C
- 7. TEMP. COEF. OF RESIST. WIRE: .000020 ohm/ohm°/°C FOR VALUES OF 50 OHMS OR HIGHER.
- 6. MECHANICAL ANGLE: 360° CONTINUOUS.
- 5. ELECTRICAL FUNCTION ANGLE: 353° ±3
- 4. INDEPENDENT LINEARITY: SEE CHART.
- 3. RESOLUTION: SEE CHART.
- 2. RESISTANCE TOLERANCE: ±5%
- 1. RESISTANCE: SEE CHART.

- 19. "O" RING SEAL.
- 18. GOLD PLATED TERMINALS.
- 17. PRECIOUS METAL TERMINALS.
- 16. GLASS FILLED MOLDED COVER.
- 15. STAINLESS STEEL SHAFT.
- 14. ANODIZED ALUMINUM HOUSING.
- 13. SHAFT ROT. TORQUE: 2 oz-in, MAX.