

## SPECIFICATIONS

RESOLUTION	INFINITE
OUTPUT SMOOTHNESS	LESS THAN 0.1% INPUT VOLTAGE
CONTACT RESIS. VARIATION	LESS THAN 2%
DIELECTRIC STRENGTH	1000 MEGOHMS AT 500VDC MIN.
INSULATION RESISTANCE	500 VAC MIN.
FRICTION	1.8 oz. (3.6 oz. FOR LCP12Y)
STOP STRENGTH	20 OZ. MIN.
RESISTANCE TEMPCO	±400 PPM/°C
WEIGHT	10 TO 35 GRAMS
LIFE EXPECTANCY	20 MILLION
BEARINGS	NYLON
TEMPERATURE RANGE	-30° TO 105° C.

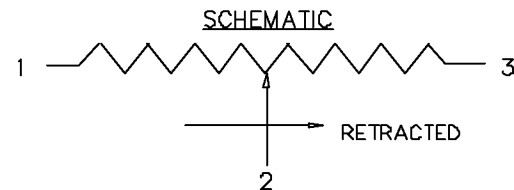
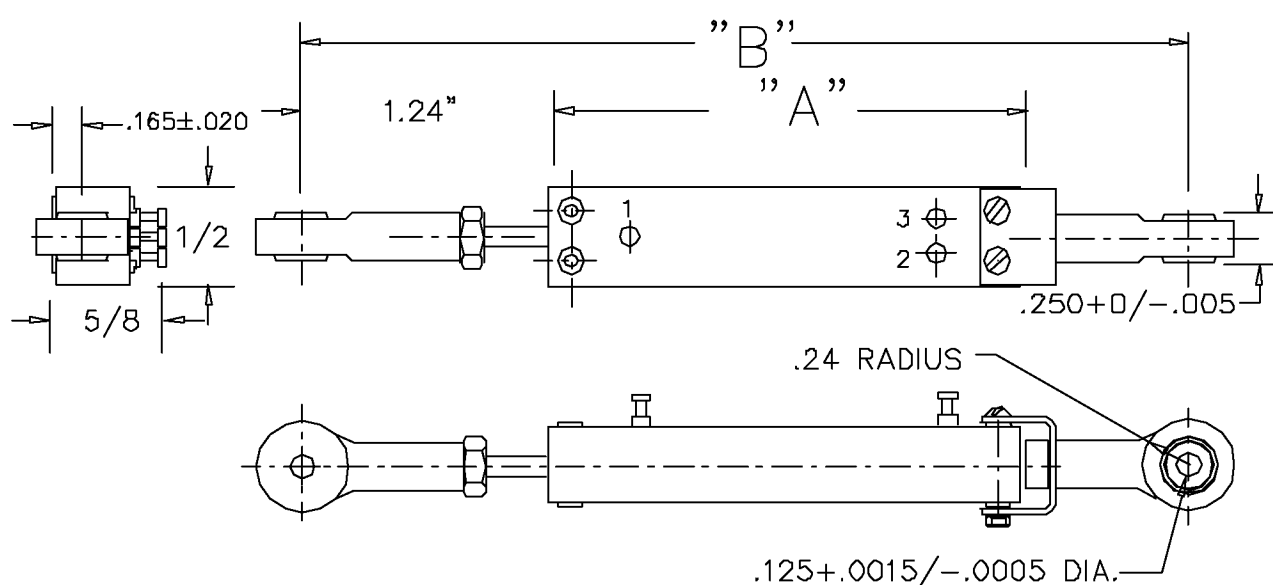
## MATERIALS

BODY	ALUMINUM(BLACK ANODIZE)
LID	HIGH TEMP. PLASTIC
SHAFT	STAINLESS STEEL
TERMINALS	BRASS GOLD PLATED
RESISTANCE ELEMENT	CONDUCTIVE PLASTIC

## OPTIONS AVAILABLE

- SPECIAL ENDED SHAFTS
- SPECIAL RESISTANCE VALUES
- SPECIAL LINEARITY
- NON STANDARD STROKES
- WIREWOUND RESISTANCE ELEMENT
- BRONZE BUSHINGS

MODEL NO.	LCP12Y-12	LCP12Y-25	LCP12Y-50	LCP12Y-100
STD. RESIS. VALUES	500,1K,2K 5K,10K	500,1K,2K 5K,10K	500,1K,2K 5K,10K	1K,2K,5K 10K,20K
RESISTANCE TOL.	±20%	±20%	±20%	±20%
LINEARITY (IND.)	±1.5%	±1.0%	±0.7%	±0.5%
POWER RATING	0.2 WATT	0.4 WATT	0.7 WATT	1.2 WATT
STROKE MECH+ .1-.0	1/2"	1"	2"	4"
STROKE ELECT ±.02	1/2"	1"	2"	4"
'A' DIM ±0.04	1.50	2.00	3.00	5.00
'B' DIM (REF.)	3.62	4.12	5.12	7.12



LCP12Y-Conductive plastic element  
 spherical ball ends  
[www.precisionsales.com](http://www.precisionsales.com)  
 610-359-1002 [eparts@precisionsales.com](mailto:eparts@precisionsales.com)