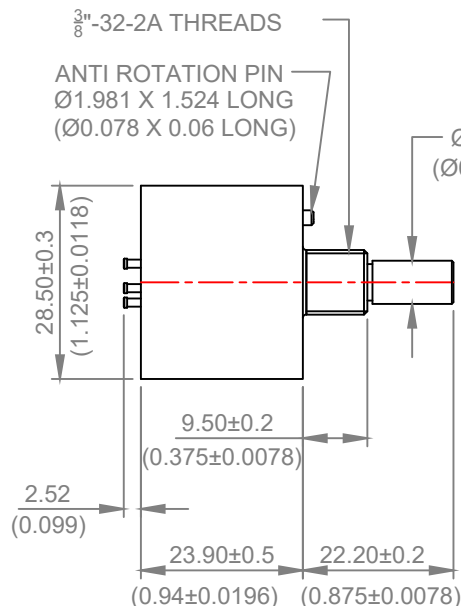
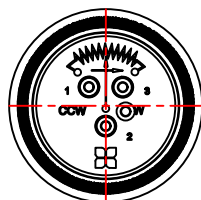
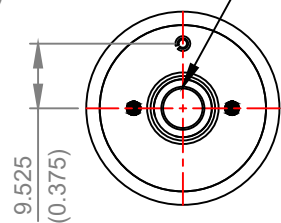


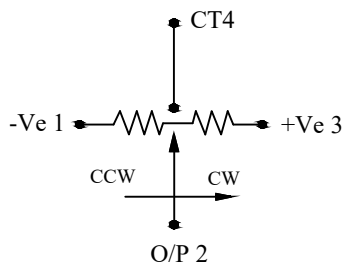
DIMENSIONS :- METRIC(INCH)



SHAFT SHOWN IN NORMAL
CENTER OF MECHANICAL
@70°±3° POSITION



REAR SIDE VIEW



ELECTRICAL SCHEMATIC DIAGRAM

- FEATURES:- 1. CONDUCTIVE PLASTIC LONG LIFE RESISTANCE ELEMENT.
2. ANODIZED ALUMINUM PRECISION MACHINED BODY
3. PRECIOUS METAL HIGH TECHNOLOGY WIPER GIVES NOISE FREE OUTPUT.

ELECTRICAL CHARACTERISTICS	UNITS	VALUE
RESISTANCE ELEMENT...	--	CONDUCTIVE PLASTIC
RESISTANCE RANGE...	Ohms	1K, 5K or 10K
RESISTANCE TOLERANCE...	±%	20
INDEPENDENT LINEARITY TOLERANCE...(IEC 393)...	±%	2
ELECTRICAL ANGLE...	DEGREES	140 ±5° (66.25° + 7.5° + 66.25°)
CENTER TAP...	--	MIN.7.5° WIDE
RESOLUTION...	--	ESSENTIALLY INFINITE
TEMPERATURE COEFFICIENT OF RESISTANCE(TCR)...	ppm/deg C	±400
POWER RATING @ 25°C...	WATTS	1.0
INSULATION RESISTANCE @ 500 VDC...	M Ohms	1000
DIELECTRIC STRENGTH @ 50 HZ...	V ac	500
MAXIMUM WIPER CURRENT...	mAmps	1
SHORT TIME WIPER CURRENT 10 SEC...	mAmps	10
END VOLTAGE AS A % OF APPLIED VOLTAGE...	%	LESS THAN 0.5

MECHANICAL CHARACTERISTICS :-

ROTATION (MECHANICAL ANGLE) CONTINUOUS...	DEGREES	140° (±70°±5°)
BEARING TYPE...	--	SLEEVE
SPRING RETURN PHASED TO CENTER OF VOLTAGE...	--	--
SPANNER SIZE OF NUT...	M.M	14.00 M.M.
NUT TIGHTNING TORQUE...	N.M.	0.8 N.M.
AXIAL PLAY...	M.M.(INCH)	0.2 (0.00787) MAX
RADIAL PLAY...	M.M.(INCH)	0.2 (0.00787) MAX

ENVIRONMENTAL CHARACTERISTICS :-

OPERATING TEMPERATURE...	DEGREES C	-30 to +105
ROHS COMPLIANCE	--	YES

PERFORMANCE :-

ROTATIONAL LIFE (SHAFT REVOLUTIONS)...	NOS.	5,000,000
PROTECTION CLASS	IP	65

MATERIALS OF CONSTRUCTION:-

HOUSING...	--	ALUMINIUM BLACK ANODIZED
SHAFT...	--	STAINLESS STEEL
TERMINALS...	--	BRASS GOLD PLATED
MOUNTING HARDWARE ...	--	LOCK WASHER-STEEL + NUT-BRASS, A/F 14.3 X 2.5 MM,BOTH NICKEL PLATED

CONTINUOUS IMPROVEMENTS ARE BEING MADE FOR ENHANCING PERFORMANCE FOR CUSTOMER BENEFIT IN PRODUCT DESIGN & PROCESS.THE PRODUCT SUPPLIED MAY BE SLIGHTLY DIFFERENT THAN DESCRIBED BY ABOVE SPECIFICATIONS

Precision Sales
& Equipment
tel: 610-359-1002
www.precisionsales.com

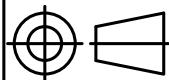
CONDUCTIVE PLASTIC POTENTIOMETER

SAJP-2515

FIRST ISSUE : 11/8/22

SCALE:-1:1

TOLERANCES
DIN-ISO 2768-1 (1991-06)
(TOLERANCE CLASS-MEDIUM)



Customer Part No.
N/A

REV - 00

SHEET

1 of 1