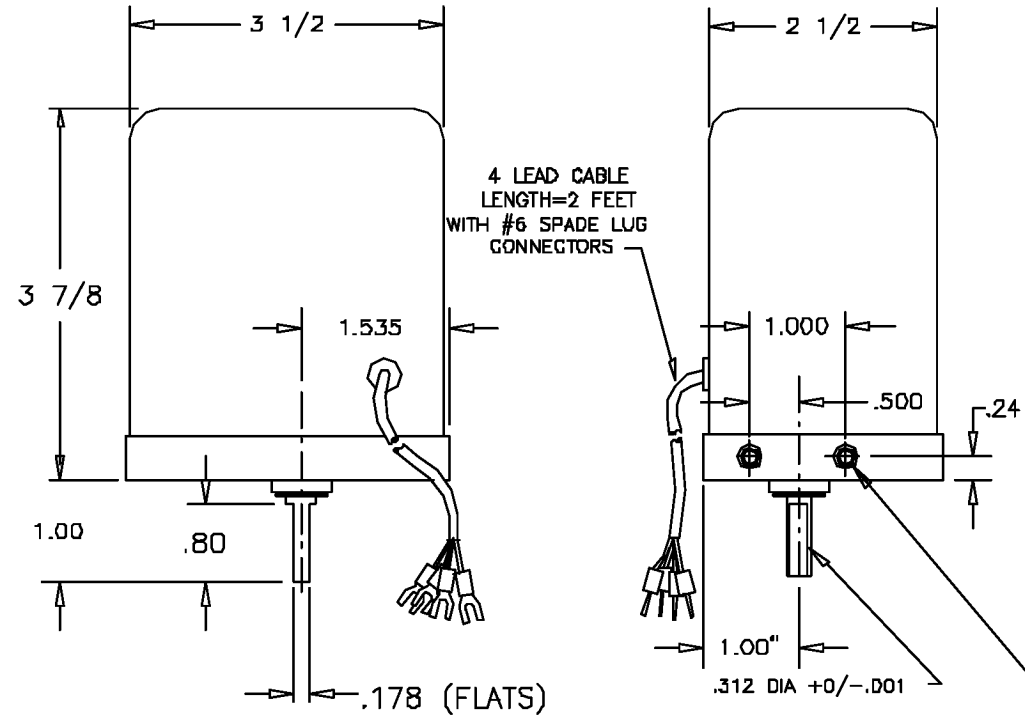


MANUFACTURED IN CALIF. U.S.A. UNDER THE FOLLOWING PATENTS:  
 48003DB, 5137257, 5461280, 5471123, 5488275, 5543884, 5712548.  
 U.S. AND FOREIGN PATENTS PENDING.

THIS DOCUMENT CONTAINS PROPRIETARY DATA OF POLARIS INDUSTRIAL ENTERPRISES, INC. NO DISCLOSURE, REPRODUCTION, OR USE OF ANY PART THERE OF MAY BE MADE EXCEPT BY WRITTEN PERMISSION.

REV.	BY	DATE	APPRVD.	P/N	VA8
------	----	------	---------	-----	-----



**SPECIFICATIONS:**

**ACTUATOR**

INPUT CURRENT ----- 4-20mA(M)OR 0-10VDC(V)  
 INPUT IMPEDANCE ----- 200 OHMS(M)OR 18,000 OHMS(V)  
 RPM ----- 1.5-3-5-10-20-40  
 POWER REQUIRED ----- 24 VDC/25 WATTS MIN  
 DYNAMIC BRAKING ----- INSTALLED  
 LIMIT SWITCHES ----- INSTALLED  
 MICRO-PROCESSOR ----- INSTALLED  
 TORQUE LIMITER ----- FACTORY SET FOR SIZE OF VALVE ORDERED.  
 OR APPROX. 8 IN.LBS MAX.  
 SEATING TORQUE ----- FACTORY SET TO PREVENT VALVE SEAT DAMAGE  
 OR SET TO CUSTOMERS SPECIFICATION.  
 OCCURS IN THE LAST 30° ROTATION.  
 UNLESS VALVE CHOSEN DOES NOT REQUIRE CLOSURE.

**ENVIRONMENTAL:**

OPERATING TEMPERATURE ----- -30°C TO +85°C  
 MOISTURE ----- SEALED AND SPLASH PROOF  
 INSULATION RESISTANCE ----- 100 MEGOHMS @ 500 VDC  
 DIELECTRIC STRENGTH ----- 500 VAC  
 WEIGHT ----- 1.7 LBS. APPROX.

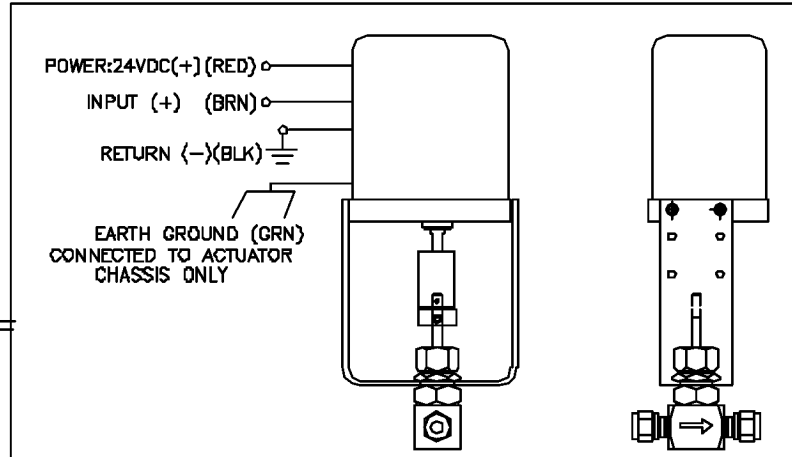
**MATERIAL:**

COVER ----- SATIN ANODIZED ALUMINUM  
 BASE ----- ANODIZED ALUMINUM  
 OUTPUT SHAFT ----- STAINLESS STEEL  
 CABLE ----- 22 GAUGE,VINYL SLEEVE  
 SCREWS ----- STAINLESS STEEL

**VALVE KIT:**

[ORDERED SEPERATELY, MOUNTED TO ACTUATOR AT ETI SYSTEMS]  
 INCLUDES VALVE, BRACKET, COUPLER AND HARDWARE, IF NOT MOUNTED.

**ACTUATOR MOUNTED TO VALVE KIT**



**TO ORDER**

VA8 [ ] [ ] [ ] [ ] RPM (SEE SPECIFICATIONS)  
 VALVE SEATING TORQUE(IN.LBS)  
 NO. OF TURNS (SEE VALVE KIT)  
 INPUT:M(4-20MA)OR V(0-10VDC)  
 MR OR VR (REVERSED ROTATION FOR REGULATORS)

EXAMPLE: VA8M-8-5-5

FOR ISOLATED FEEDBACK POSITION OPTION (FEEDBACK DIAGRAM)

ORDER: VA8MF-20-3-40 (EXAMPLE)

CLOSE ← ORG  
 BLU ← WHT

<b>TOLERANCES</b> XX = +/- .010" FRACT. = +/- 1/64" XXX = +/- .005" ANGLES = +/- 1/2" ALL SPECIFICATIONS SUBJECT TO CHANGE WITHOUT NOTICE.	SCALE	DATE: 2-24-01	www.precisionsales.com 610-359-1002 F: 610-353-1674	TITLE	VALVE ACTUATOR	PART NO.	VA8
		BY: GC					
		APPRVD					
USED ON	CODE IDENT: 19477						