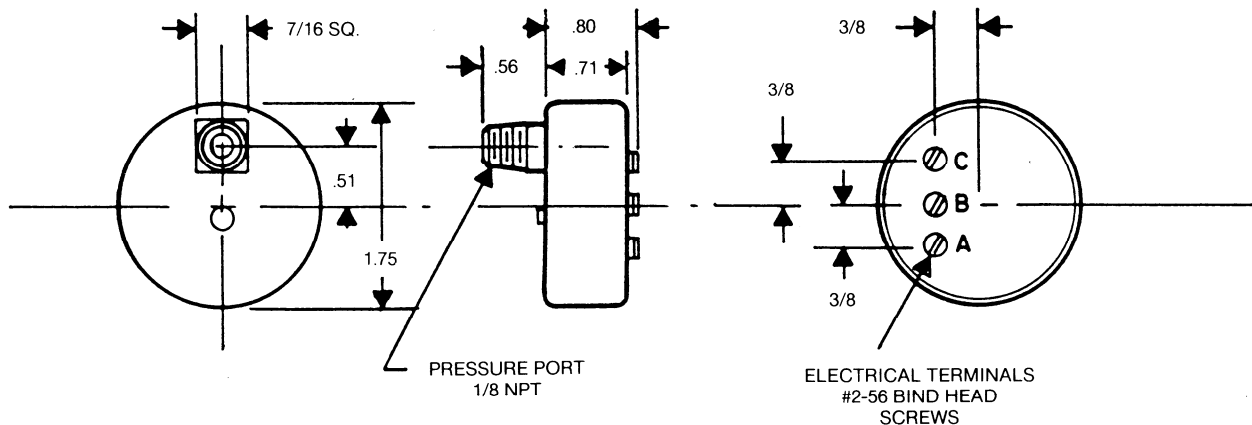


# POTENTIOMETER TYPE, INFINITE RESOLUTION COMMERCIAL GRADE, LOW COST PRESSURE TRANSDUCER **MODEL 9000**



*Designed as a low cost pressure transducer, Model 9000 utilizes a ni-span C bourdon tube sensing element usually found in more expensive units. Lower cost is achieved via standardization of pressure ranges, available resistances and linearity ranges. Unit provides infinite resolution through use of conductive film resistance element. Typical applications include pressure monitoring in process control, agriculture, automotive testing and refinery operations.*

## ELECTRICAL SPECIFICATIONS:

Pressure Ranges*	100, 500, 1000, 5000 psig.
Resistance	1K OHMS, 2K OHMS, or 5K OHMS
Independent Linearity	±5%
Repeatability	.25%
Output	@100% psig 80% min. Vo @ 0% psig 20% max. Vo
Power	1 Watt
Life	100 psig 5 x 10 <sup>6</sup> F.S. Cycles 500 psig 2.5 x 10 <sup>6</sup> F.S. Cycles 1000 psig 1.0 x 10 <sup>6</sup> F.S. Cycles 5000 psig 5.0 x 10 <sup>4</sup> F.S. Cycles
Overpressure	20%
Weight	3 oz.
Temperature Range	-55°C to 85°C
Media	Any media compatible with Ni-Span C and Silver Braze

\*Other pressure ranges available on special order.

## CONSTRUCTION:

Case	Aluminum Phenolic
Pressure Fitting	Stainless Steel
Sensing Element	Ni-Span-C
Resistance Element	Conductive Film

## SPECIAL FEATURES:

High voltage output AC or DC  
Requires no auxiliary equipment for Signal conditioning, Amplifying, Converting electrical inputs or outputs.