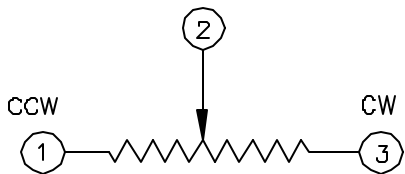


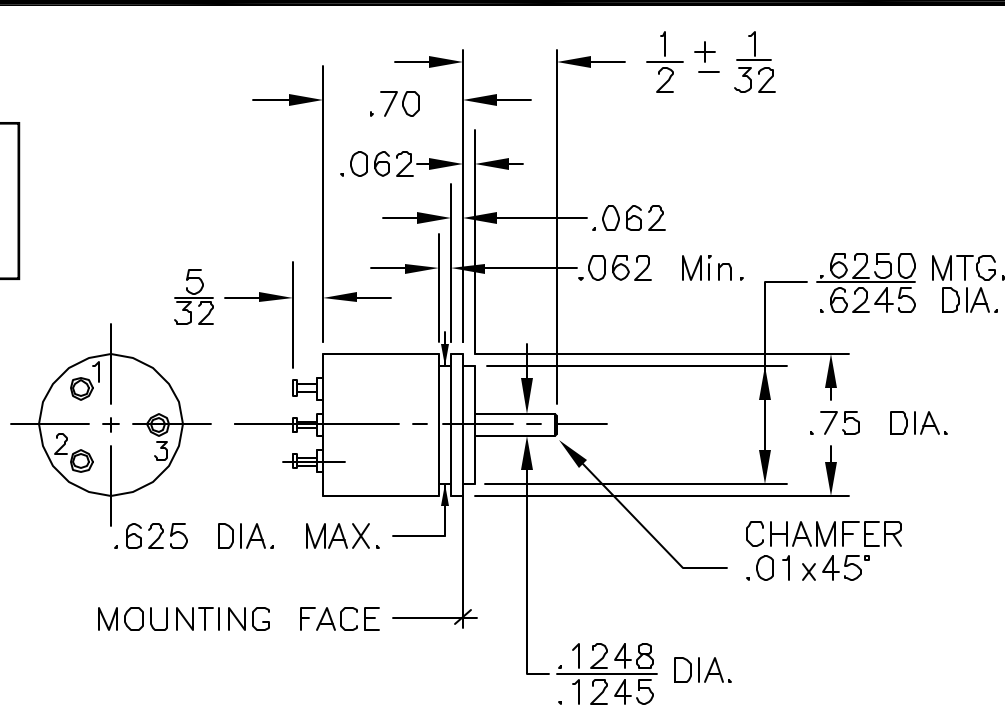
75-M92

Precision Sales Inc
 www.precisionsales.com
 eparts@ix.netcom.com
 610-59-1002

WIPER



SCHEMATIC AS VIEWED
 FROM SHAFT END



DASH No.	RESISTANCE (OHMS)	RESOL (%)	LIN (±%)
50R	50	.584	1.2
101	100	.455	1.0
251	250	.282	.60
501	500	.254	.50
102	1,000	.179	.40
202	2,000	.198	.40
252	2,500	.196	.40
502	5,000	.134	.30
103	10,000	.131	.30
203	20,000	.112	.25
253	25,000	.102	.25

9. POWER RATING: 2 WATTS AT 85°C DERATED TO ZERO AT 135°C.
8. OPERATING TEMPERATURE RANGE: -55° TO +135°C.
7. TEMPERATURE COEFFICIENT OF RESISTANCE WIRE: 20 PPM/°C. FOR VALUES OF 50 OHMS OR GREATER.
6. TOTAL MECHANICAL TRAVEL: 360° CONTINUOUS.
5. THEORETICAL ELECTRICAL TRAVEL: 350° ±2°
4. INDEPENDENT LINEARITY: SEE CHART.
3. THEORETICAL RESOLUTION: SEE CHART.
2. TOTAL RESISTANCE TOLERANCE: ±5%.
1. TOTAL RESISTANCE: SEE CHART. (OTHER VALUES ON REQUEST).
18. PRECIOUS METAL CONTACTS.
17. BRONZE SLEEVE BEARING.
16. STAINLESS STEEL SHAFT.
15. ANODIZED ALUMINUM HOUSING.
14. WHEN USING AN "O" RING SEAL THE RUNNING TORQUE IS: 1.2 OUNCE-INCH.
13. RUNNING TORQUE: 0.2 OUNCE-INCH.
12. EQUIVALENT NOISE RESISTANCE: 100 OHMS, MAX.
11. LIFE: 1,000,000 REV. AT 40 RPM.
10. DIELECTRIC STRENGTH: 1000 VOLTS AC FOR 60 SEC.