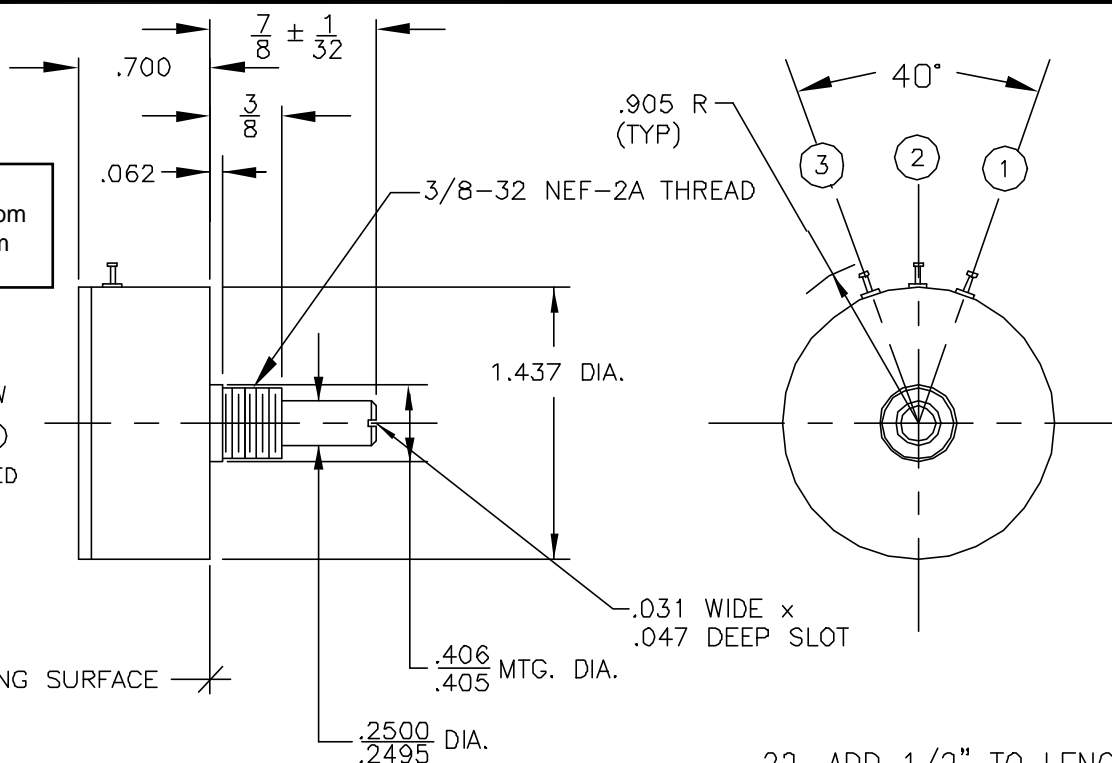
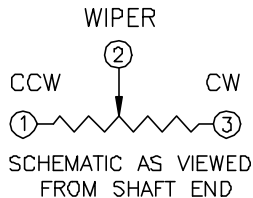


143-M7

Precision Sales Inc
 www.precisionsales.com
 eparts@ix.netcom.com
 610-359-1002



DASH No.	RESIST. (ohms)	RESOL. (%)	LIN. (±%)
50R	50	.251	1.0
101	100	.222	1.0
251	250	.160	.75
501	500	.166	.75
102	1,000	.152	.75
202	2,000	.099	.50
252	2,500	.090	.50
502	5,000	.083	.50
103	10,000	.073	.40
203	20,000	.064	.30
253	25,000	.061	.30
503	50,000	.050	.30
104	100,000	.027	.30

10. DIELECTRIC STRENGTH: 1000 V RMS FOR 60 SEC.
9. WATTAGE: 3.5 WATTS AT 85°C DERATED TO ZERO AT 135°C.
8. OPERATING TEMPERATURE RANGE: -55° TO +135°C.
7. TEMPERATURE COEFFICIENT OF RESISTANCE WIRE: .000020 OHM/OHM/°C FOR VALUES OF 50 OHMS OR GREATER.
6. MECHANICAL ANGLE: 330° ±5°.
5. ELECTRICAL FUNCTION ANGLE: 320° ±2°.
4. INDEPENDENT LINEARITY: SEE CHART.
3. RESOLUTION: SEE CHART.
2. RESISTANCE TOLERANCE: ±3%.
1. RESISTANCE: SEE CHART (OTHER VALUES ON REQUEST).

22. ADD 1/2" TO LENGTH FOR EACH ADDITIONAL CUP.
21. STOP STRENGTH: 6 POUND-INCHES.
20. HARDWARE: INTERNAL TOOTH LOCKWASHER & HEXNUT.
19. SEALED CONSTRUCTION.
18. GOLD PLATED TERMINALS.
17. PRECIOUS METAL CONTACTS.
16. BRONZE SLEEVE BEARING.
15. STAINLESS STEEL SHAFT AND LOCATING PIN.
14. ANODIZED ALUMINUM HOUSING.
13. SHAFT ROTATIONAL TORQUE: 2 TO 8 OUNCE-INCHES.
12. EQUIVALENT NOISE RESISTANCE: 100 OHMS, MAX.
11. LIFE: 25,000 CYCLES AT 40 RPM.