

SPECIFICATIONS

Precision Sales Inc
610-359-1002 F 610-353-1674

MR46B-3,5,10

ELECTRICAL

RESISTANCE RANGE _____	1/2 OHM TO 300K OHM
RESISTANCE TOLERANCE _____	±5%
LINEARITY, INDEPENDENT _____	SEE CHART
RESOLUTION _____	SEE CHART
END RESISTANCE _____	1 OHM OR 1%
ELECTRICAL TRAVEL _____	SEE CHART
NOISE _____	100 OHMS MAX
POWER RATING _____	SEE CHART
INSULATION RESISTANCE _____	100 MEGOHMS AT 1000 VDC MIN.
DIELECTRIC STRENGTH _____	1000 VAC MIN.

MECHANICAL

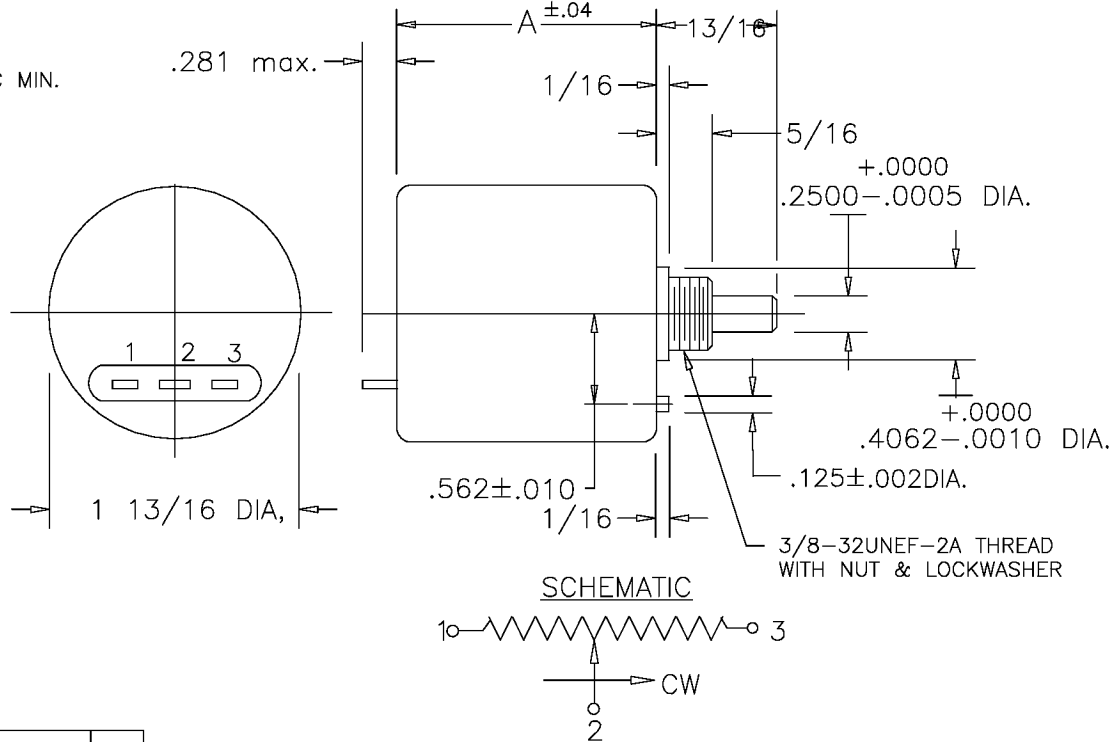
NUMBER OF TURNS _____	SEE CHART
MECHANICAL TRAVEL _____	SEE CHART
TORQUE, ROTATIONAL _____	2.8 OZ.IN.
SHAFT END PLAY _____	.005 T.I.R.
LIFE (SHAFT REVOLUTIONS) _____	SEE CHART
STOP STRENGTH _____	125 OZ.IN. MIN.

ENVIRONMENTAL

OPERATING TEMPERATURE _____	-55°C TO +105°C
TEMPERATURE COEFFICIENT _____	SEE CHART
VIBRATION _____	10HZ TO 2000HZ 15G
SHOCK _____	50G 11MS
MOISTURE RESISTANCE _____	40°C 95%RH 120 HOURS

OPTIONS

SPECIAL SHAFTS	BALL BEARINGS
SERVO MOUNT	SPECIAL LINEARITY
DUAL GANGS	SPECIAL RESISTANCES



% RESOLUTION AND TEMPERATURE COEFFICIENT CHART

RESIS. MODEL	# SLIDEWIRE (INFINITE RESOLUTION)																				
	.5	1	2	5	10	20	50	100	200	500	1K	2K	5K	10K	20K	50K	100K	200K	300K	500K	
-3	#	#	#	#	#	.180	.145	.105	.084	.066	.048	.035	.026	.020	.015	.012	.009	.007	.005	.004	.004
-5	#	#	#	#	#	.108	.078	.061	.048	.035	.026	.020	.015	.012	.009	.007	.005	.004	.004	.004	.004
-10	#	#	#	#	#	.050	.040	.031	.023	.016	.012	.009	.007	.005	.004	.004	.004	.004	.004	.004	.004
TEMPCO	80 PPM/°C					20 PPM/°C															

ELECTRICAL TRAVEL	MECHANICAL TRAVEL	LINEARITY (IND.)	NO. OF TURNS	POWER RATING @ 40°C	ROTATIONAL LIFE (TURNS)	WEIGHT	A DIM.
1080°±5°	1080°+10°-0°	0.5%	3	2 WATTS	600,000	2.8 OZ.	1.50
1800°±5°	1800°+10°-0°	0.5%	5	2.5 WATTS	1,000,000	3.2 OZ.	1.50
3600°±5°	3600°+10°-0°	0.25%	10	5 WATTS	2,000,000	4.2 OZ.	2.20