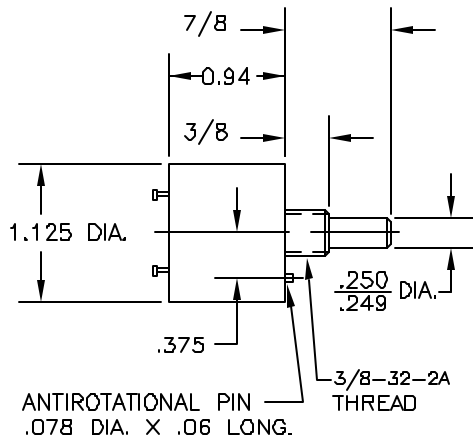
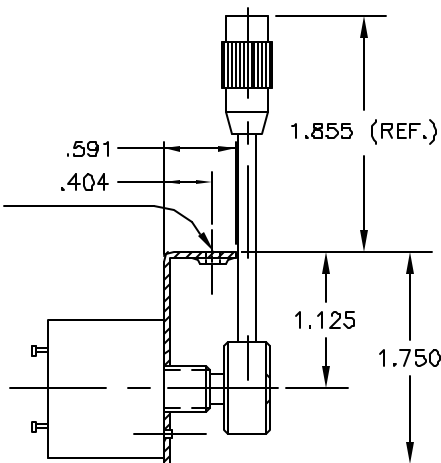


REVISIONS

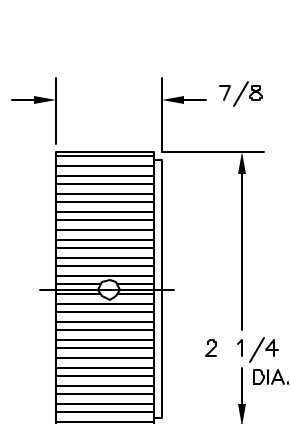
G/L	DESCRIPTION	BY	APP'D	DATE
N	ADDED NOTES 11 & 12	AD	MKG	4/23/02
P	DM. 2.98 WAS 3-1/16, 1.855 WAS 1.937	AD	JAH	1/13/03
Q	REV. NOTES 3 & 5	AD	JAH	2/18/03



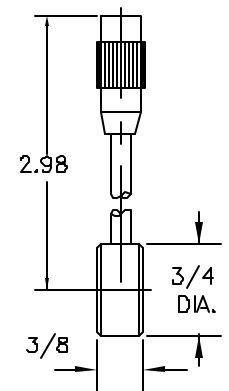
MOUNTING  
4-40  
EXTRUDED  
THREADED  
HOLE  
2 PLACES



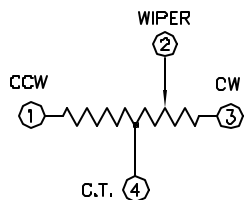
MOUNTING "L" BRACKET  
(OPTIONAL) ONLY TO  
BE USED WITH  
DETACHABLE KNOB (TYPE F).



DETACHABLE KNOB  
(TYPE G)



DETACHABLE KNOB  
(TYPE F)



SCHMATIC AS VIEWED  
FROM SHAFT END.

203	20,000
103	10,000
502	5,000
102	1,000
501	500
251	250
DASH NO.	RESISTANCE

PART NO.	DESIGNATION
SAJ2515-F-502	RESISTANCE (5K)
	KNOB TYPE
	BASIC NUMBER

12. OPERATING TEMPERATURE RANGE: -30° TO +105°C.
11. LIFE: 5,000,000 CYCLES.
10. LINEARITY ±2%.
9. KNOB TORQUE: 12 OUNCE-INCHES, NOMINAL.
8. WITH CENTER TAP AT SPRING CENTER.
7. HARDWARE: LOCKWASHER AND HEX NUT.
6. POWER: 1 WATT AT 25°C.
5. ELECTRICAL ANGLE: 140° TOTAL TRAVEL (±70°±5° FROM CENTER).
4. SPRING RETURN PHASED TO CENTER OF VOLTAGE.
3. MECHANICAL ANGLE: 140° TOTAL TRAVEL (±70°±5° FROM CENTER).
2. CONDUCTIVE PLASTIC POTENTIOMETER.
1. TOTAL RESISTANCE ±20% (SEE CHART).

Precision Sales Inc  
www.precisionsales.com  
eparts@ix.netcom.com  
610-59-1002