

PRO-5

COMPACT RUGGED CAST DESIGN SINGLE AXIS CONTROLLER FOR HARSH ENVIRONMENTS

Construction:

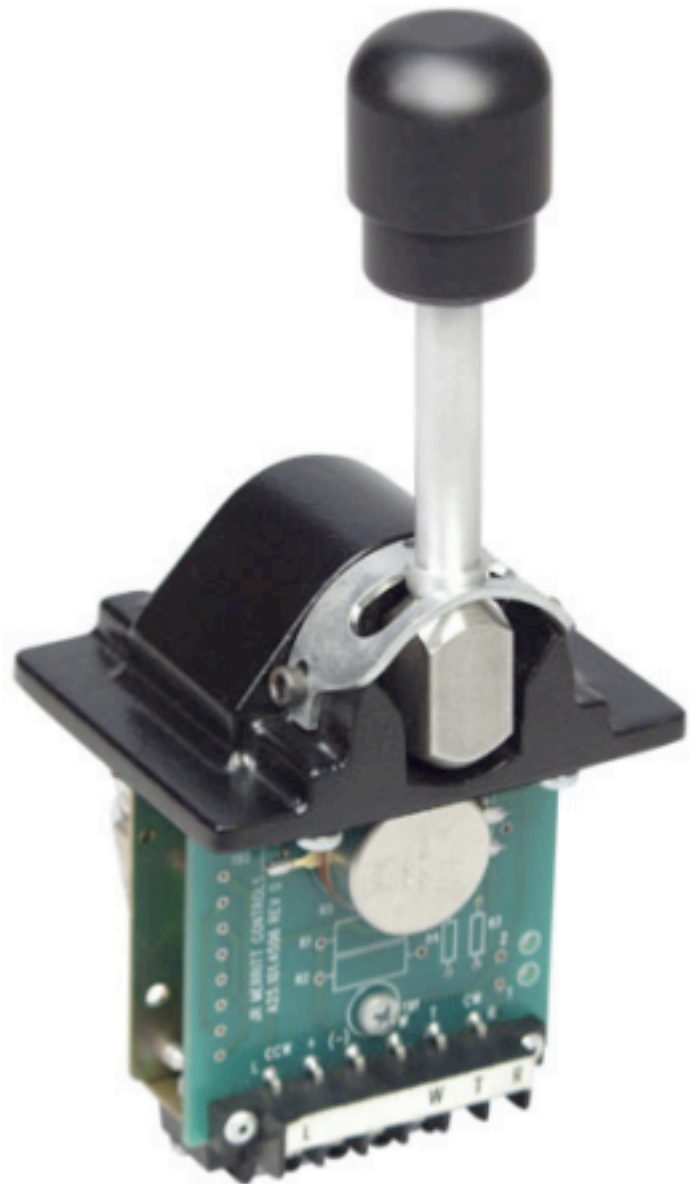
The cast housing construction of the PRO-5 is suitable for use in wet and dirty environments. The PRO-5 provides precise proportional control for Electro-hydraulic valves and AC/DC variable speed drives. Your specific control requirements can be accommodated by a variety of standard and custom engineered electronic amplifiers.

Application:

This weatherproof design is ideal for use on Scissor Lifts, Work Platforms, Bucket Trucks, Cranes, Agricultural, Mining and Forestry equipment where control of Electro-hydraulic proportional valves or variable speed drives is desired.

Features:

- Rugged cast construction.
- Gasketing for outdoor use.
- Long life, compression type return spring system.
- 3 Spring forces available, easily field replaceable.
- Mounting holes are interchangeable with other popular controllers (on request).
- Friction held handle.
- Large variety of optional handle configurations including; rocker switches, mechanical interlock and push-buttons.
- Potentiometric, switched and PWM outputs.
- (Proportional Feathering Control) PFC, PFC/CR and MPFC Electro-hydraulic valve drive boards.
- 20 Million cycle mechanical operating life.
- Rugged handle shaft and stop design.
- Tooled fixed cams.
- Bang / Bang design.



PRO-5 ORDERING INFORMATION

- Basic Assembly:** 5.25" handle height off of panel and round ball handle supplied standard.
- Handle:** Reference Catalog Section 5 for a selection of handle options.
- Contacts:** (6) Micro switches max. Optional gold plated contacts available.
- Potentiometers:** 0.5 watt 5 million cycles provided standard. Specify resistance and type required, for example, standard 3 terminal or center tapped.

Consult factory for custom requirements.
- Electronics:** See PFC, PFC/CR or MPFC (Proportional Feathering Control) for electronic ordering information.

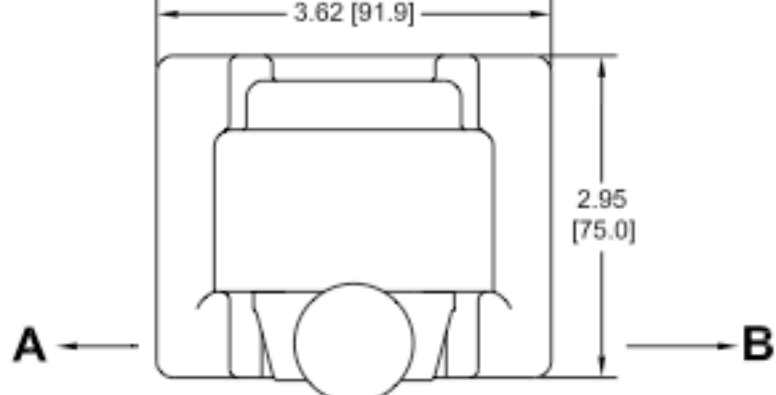
PRO-5 TECHNICAL DATA

Mechanical:

- **Operating Temperature:** -25°-+70°C
- **Detented Positions:** 0° null
- **Gear Ratio:** 3.5:1
- **Mechanical Life:** 20 million cycles
- **Handle Travel:** ±36° for proportional
±20° for Bang/Bang

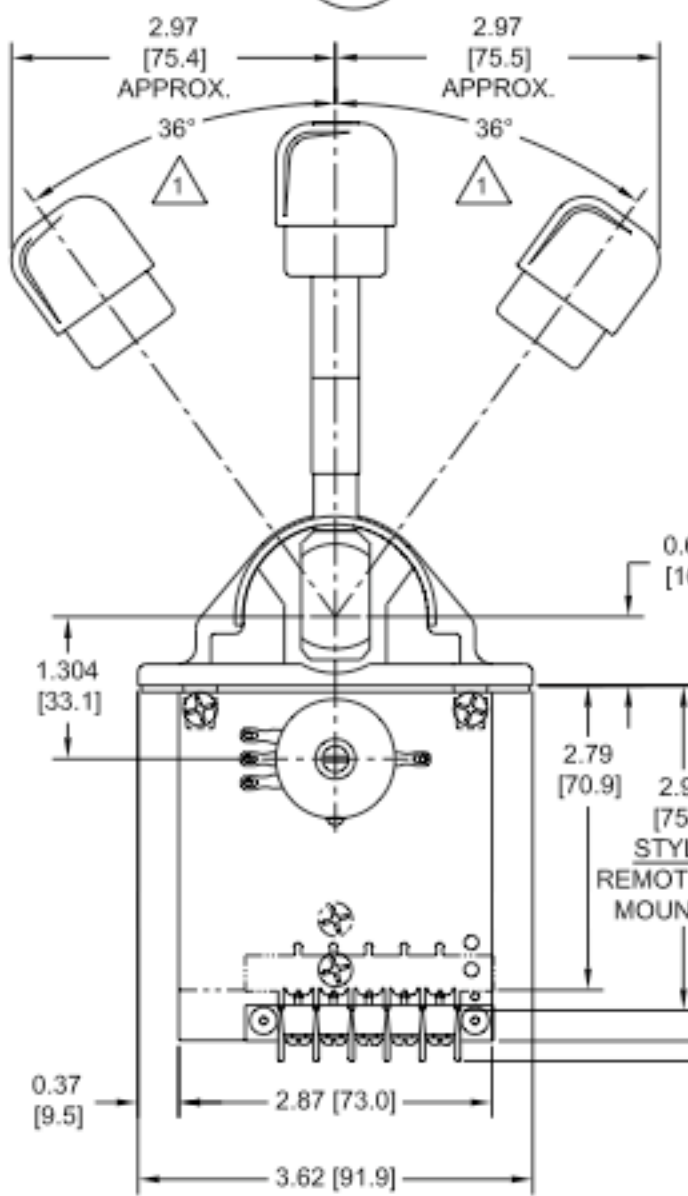
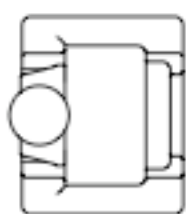
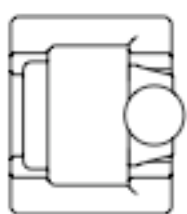
Electrical:

- **Contacts:**
(6) Micro switches max without potentiometer.
(4) Micro switches max with potentiometer.
- **Rating:**
AC 10 A @ 125, 250 VAC continuous.
DC 10 A @ 30 VDC resistive and inductive.
- **Potentiometers:** 3 wire or 10k 4 wire 0.5 watt 5 million revolutions.
(Consult factory for special potentiometer requirements.)

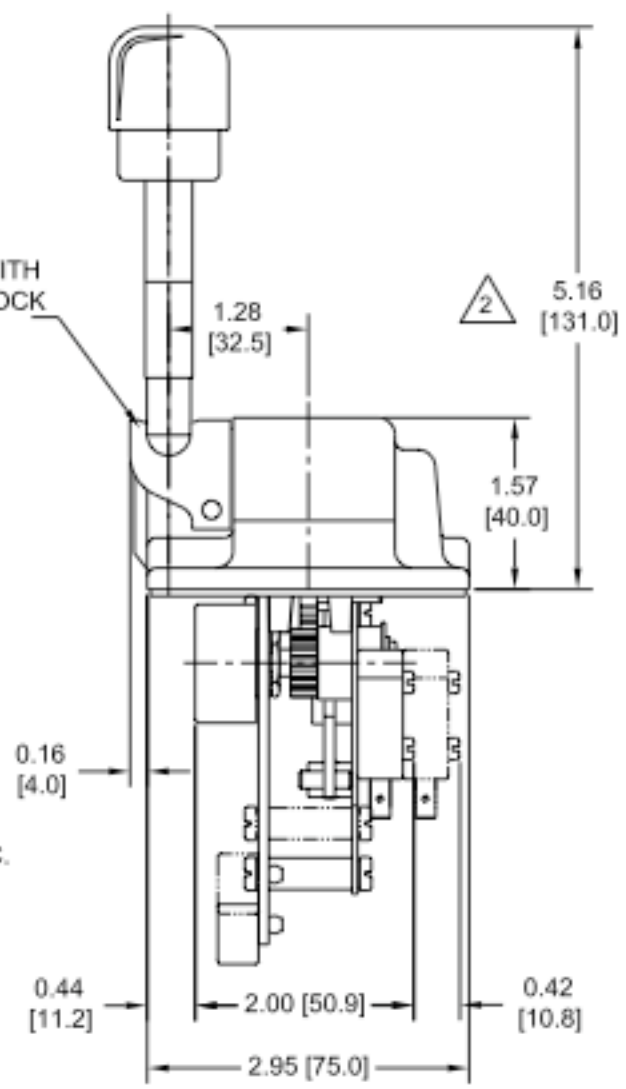


PRO5-N

PRO5-U

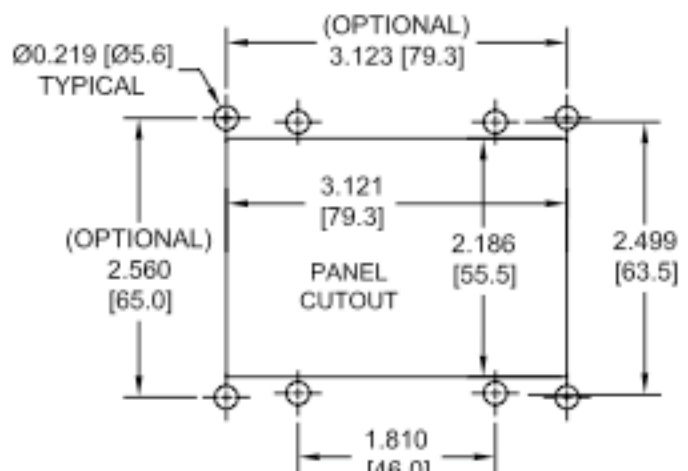


GATE IS REQUIRED WITH MECHANICAL INTERLOCK



PANEL MOUNTING DETAIL

- 1 BANG BANG CONSTRUCTION HANDLE TRAVEL IS $\pm 20^\circ$ $\pm 2.18"$ TO END OF HANDLE AT FULL TRAVEL
- 2 CUSTOM HANDLE LENGTH AVAILABLE ON REQUEST



Precision Sales Inc
 610-359-1002
 F:610-353-1674