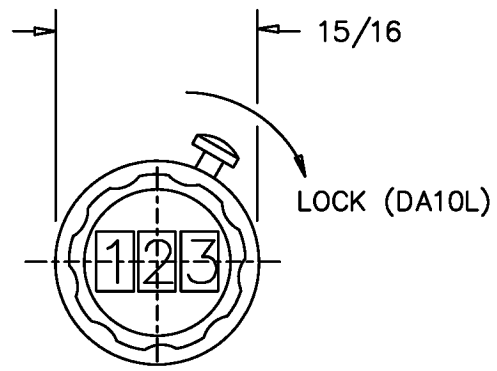
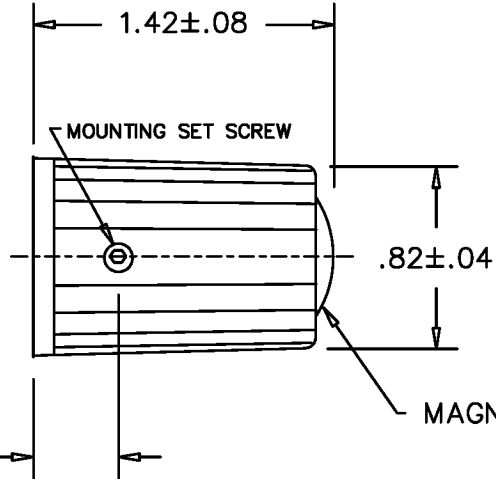
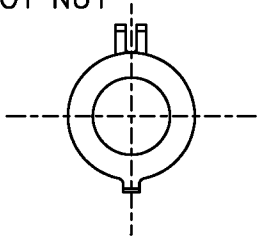


NON-TURN MOUNTING  
BRACKET. INSTALL UNDER  
POT NUT



SPECIFICATIONS

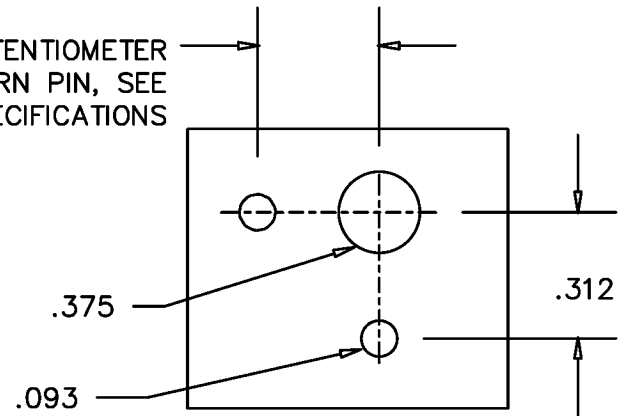
NUMBER OF TURNS ----- 10 (000 TO 999)

LOCK ----- (SEE CHART FOR APPLICABLE PART No.)

OPERATING TEMPERATURE ----- -30°C TO +85°C

WEIGHT ----- 1.5 OZ.

DIMENSION FOR POTENTIOMETER  
NON TURN PIN, SEE  
POT SPECIFICATIONS



PANEL DRILLING

PART #	SHAFT SIZE	LOCKING UNIT
DA10L-1/4	0,250	YES
DA10L-1/8	0.125	YES
DA10L-6mm	6mm	YES
DA10L-3mm	3mm	YES
DA10N-1/4	0.250	NO
DA10N-1/8	0.125	NO
DA10N-6mm	6mm	NO
DA10N-3mm	3mm	NO

MATERIAL

- HOUSING ----- BLACK PLASTIC
- BASE, INTERNAL ----- CAST ALUMINUM
- BUSHING ----- BRASS
- FACE ----- SATIN
- WHEELS ----- WHITE
- NUMBERS ----- BLACK

Precision Sales Inc  
www.precision1saes.com  
eparts@precision1sales.com  
610-359-1002